

COVID-19

Public Collection Event

Best Practices



No Contact Transactions



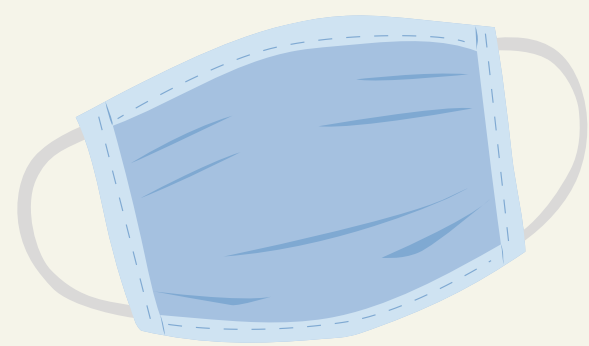
- Credit cards only (cash not accepted)
- Customer places their own card into the point of sale mobile device
- If card requires signature, point of sale mobile device is disinfected between each use

Stay in Vehicle



- Customers are asked to remain in vehicle
- Customers may crack window to discuss recycling needs
- Staff will remove items from trunk or cargo area of vehicle
- All staff will maintain social distancing. A minimum of 6' between all parties is required.

Protective Equipment



Staff will utilize the following personal protective equipment:

- Visor style full face shields
- Disposable protective masks
- Disposable Nitrile gloves
- High visibility vests
- Alcohol based contact sanitizer for point of sale device
- Alcohol based hand sanitizer

